



SMOOTH N SLEEK SDN BHD

(Co. Reg. No: 321141-K) ESTD. SINCE 1994

UNIT 1-05-12, KRYSTAL POINT CORPORATE PARK, KRYSTAL POINT II,
LEBUH BUKIT KECIL 6, 11900 BAYAN LEPAS, PENANG, MALAYSIA.

TEL : (6)04-644 8029, 644 9029 FAX : (6)04-644 0107 E-mail : sales@snspcb.com
WEBSITE : www.snspcb.com

Professional Repair Kit – ORDER # 118-1990

The Professional Repair Kit is the most complete and most versatile circuit board repair kit you'll find anywhere. It's the total package. The kit includes dry film, epoxy-backed circuit frames, and unique replacement circuits that require no messy liquid epoxy. There are eyelets and setting tools for plated through hole repair, Circuit Tracks to repair damaged circuits, epoxy and color agents for solder mask or base board repairs ...all packaged in a convenient ESD safe carrying case. If you need to repair damaged circuit boards, the all-in-one Professional Kit is just what you need.

Note: For small (under .040" wide) surface mounts and BGA pads the [Circuit Bonding System](#) is recommended to more precisely control the Bonding force.

Applications

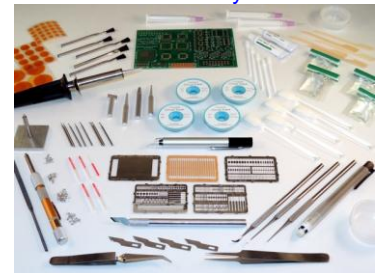
- Replacing damaged surface mount pads.
 - [IPC 7721 Repair Procedure - 4.7.2 Surface Mount Pad Repair, Film Adhesive Method](#)
- Replacing damaged BGA pads.
 - [IPC 7721 Repair Procedure - 4.7.3 BGA Pad Repair, Film Adhesive Method](#)
- Replacing damaged lands.
 - [IPC 7721 Repair Procedure - 4.5.2 Land Repair, Film Adhesive Method](#)
- Replacing damaged gold contacts.
 - [IPC 7721 Repair Procedure - 4.6.2 Edge Contact Repair, Film Adhesive Method](#)
- Repairing damaged conductors.
 - [IPC 7721 Repair Procedure - 4.2.1 Conductor Repair, Foil Jumper Method](#)
- Replacing damaged plated holes.
 - [IPC 7721 Repair Procedure - 5.1 Plated Hole Repair](#)
- Repairing damaged base board.
 - [IPC 7721 Repair Procedure - 3.5.1 Base Board Repair, Epoxy Method](#)
- Repairing damaged base board corners and edges.
 - [IPC 7721 Repair Procedure - 3.5.3 Base Board Repair, Edge Transplant Method](#)
- Repairing damaged coatings and solder mask.
 - [IPC 7721 Repair Procedure - 2.4.1 Coating Replacement, Solder Mask](#)

Features

- Complete - has everything you need to repair multiple types of board damage
- Economical - easy to use, all kit components designed to save you time and money
- Convenient packaging - contents neatly arranged in handy carrying case
- Industry approved - our most popular kit for board work that meets IPC guidelines
- Quality throughout - all components are prime quality, time-tested, to meet our high standards, and yours.



Professional Repair Kit is packaged in an ESD safe carry case.



Professional Repair Kit includes everything needed for a wide range of circuit board repair needs



Before

After

Damaged surface mount pads replaced with new dry film adhesive backed pads.



Before

After

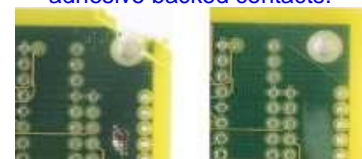
Lands replaced with new dry film adhesive backed lands. Plated holes repaired with eyelets. Conductors repaired with Circuit Tracks.



Before

After

Gold contacts replaced with new dry film adhesive backed contacts.



Before

After

Damaged base board repaired with transplant material, high strength epoxy, and color agents.



SMOOTH N SLEEK SDN BHD

(Co. Reg. No: 321141-K) ESTD. SINCE 1994

UNIT 1-05-12, KRISTAL POINT CORPORATE PARK, KRISTAL POINT II,
LEBUH BUKIT KECIL 6, 11900 BAYAN LEPAS, PENANG, MALAYSIA.

TEL : (6)04-644 8029, 644 9029 FAX : (6)04-644 0107 E-mail : sales@snspcb.com

WEBSITE : www.snspcb.com

Part No.	Description
118-1989	Professional Repair Kit, 120 VAC
118-1990	Professional Repair Kit, 230 VAC *

Kit Includes

Part No.	Qty	Description
118-1842	1	Probe Pick
118-1843	1	Scrapper
118-1844	1	Wire Guide
118-1851	1	Bonding Tip, Tapered
118-1855	1	Bonding Tip, .080" Diameter
118-1857	1	Bonding Tip, .120" Diameter
118-1868	1	Bonding Tip, .080" x .120"
118-1871	1	Bonding Tip, .120" x .0500"
118-1875	1	Bonding Film, 2.25" x 1.50"
118-1877	1	Bonding Iron, 230 VAC
118-1879	1	Practice Board (OSP Finish)
118-1881A	1	Pocket Measuring Microscope
118-1885	2	Setting Tool
118-1886	1	Tool Base
118-1888	1	File
118-1889	1	Tool Handle
118-1889A	1	Abrader
118-1890	1	Mill Handle
118-1890A	1	Tool Grip
118-1894	4	Epoxy
118-1896	5	Plastic Cup
118-1897A	5	Mixing Pick
118-1930	3	Syringe Assembly
118-1935	1	Circuit Track, .002" x .006"
118-1937	1	Circuit Track, .002" x .010"
118-1939	1	Circuit Track, .003" x .015"
118-1941	1	Circuit Track, .005" x .030"
118-1943A	8	Ball Mill Pack – Sizes # 1/2" - # 7
118-1956	25	Eyelet, Flat Flange .030" ID x .093" LUF
118-1960	25	Eyelet, Flat Flange .036" ID x .093" LUF
118-1962	25	Eyelet, Flat Flange .045" ID x .093" LUF

Part No.	Qty	Description
118-1964	25	Eyelet, Flat Flange .057" ID x .095" LUF
118-1972	1	Color Agent, PMS 348
118-1973	1	Color Agent, PMS 358
118-2009A	5	Alcohol Swab
118-2010	5	Foam Swab, 3/16" Tip
118-2010A	1	Cleaning Brushes
118-2010B	120	High Temp Tape Disc, .25" Diameter
118-2010C	60	High Temp Tape Disc, .50" Diameter
118-2010D	20	High Temp Tape Disc, 1.00" Diameter
118-2023	1	Tape Dots – Variety Samples
118-2024A	1	Tweezer, Point Tip
118-2024B	1	Tweezer, Crossover
118-2028	1	Knife, #16 Blade
118-2028A	5	Micro Probes
118-2121	1	CBLANKAS Circuit Frame, Blank - Bright Tin
118-2124	1	CC050060AG Circuit Frame, Contacts .050"/.060" – Bright Tin
118-2190	1	CFV002AS Circuit Frame, Variety – Bright Tin
118-2191	1	CFV003AS Circuit Frame, Variety – Bright Tin
118-2280	1	CSVAR1AS Circuit Frame, SMP Variety-Bright Tin